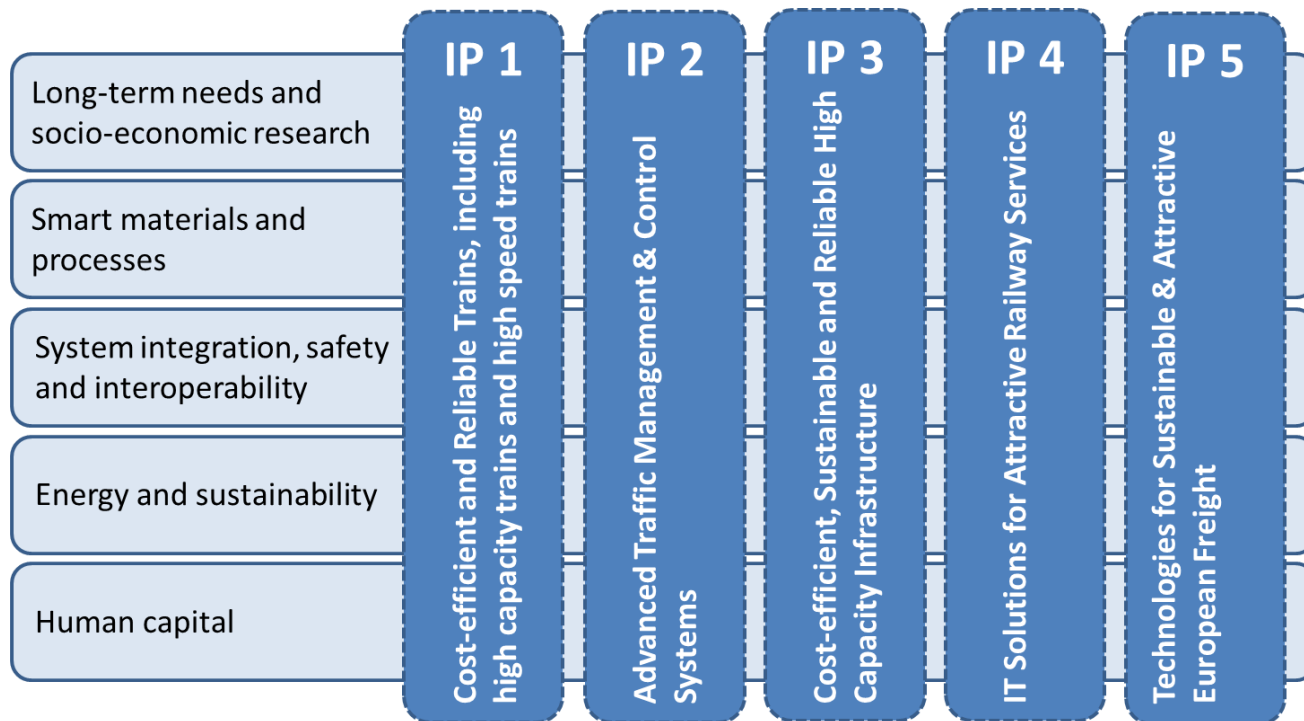




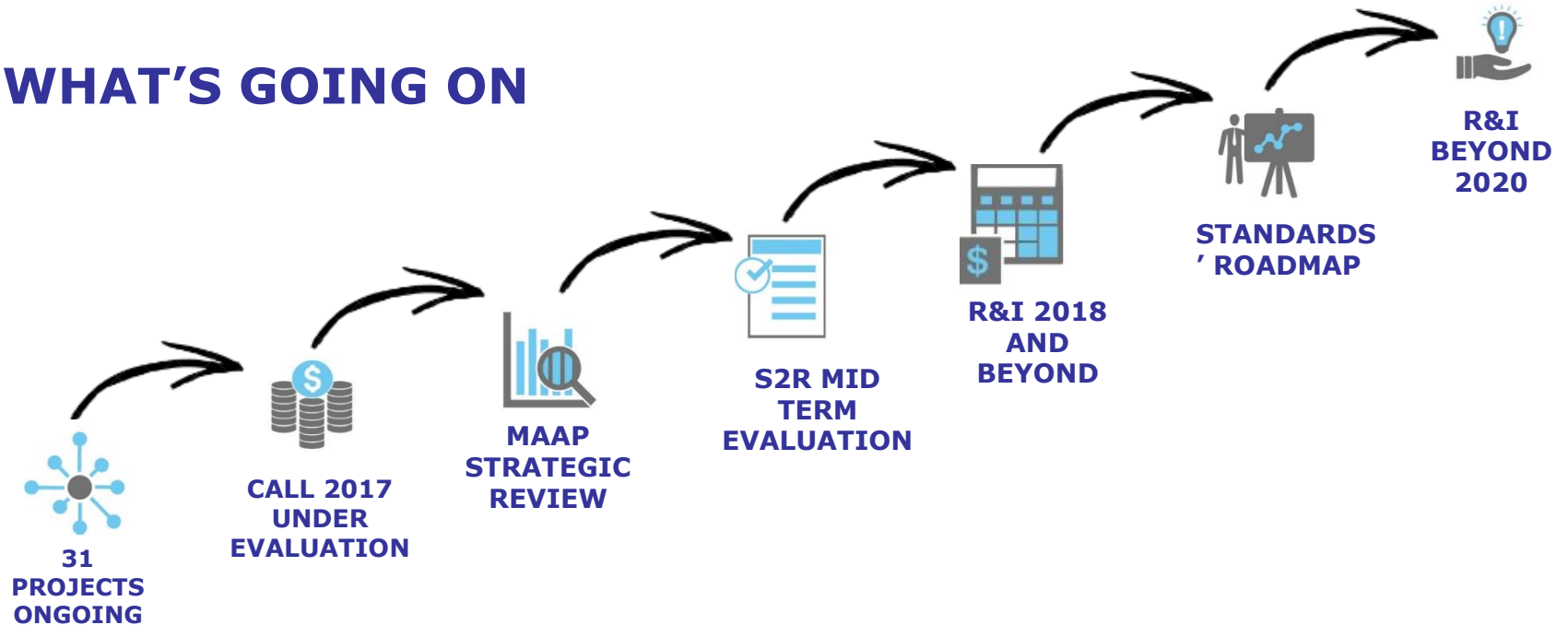
European Rail Research & Innovation ongoing and beyond 2020

Carlo M Borghini, Executive Director

S2R PROGRAMME: INTEGRATED CONSISTENT DELIVERY ORIENTED

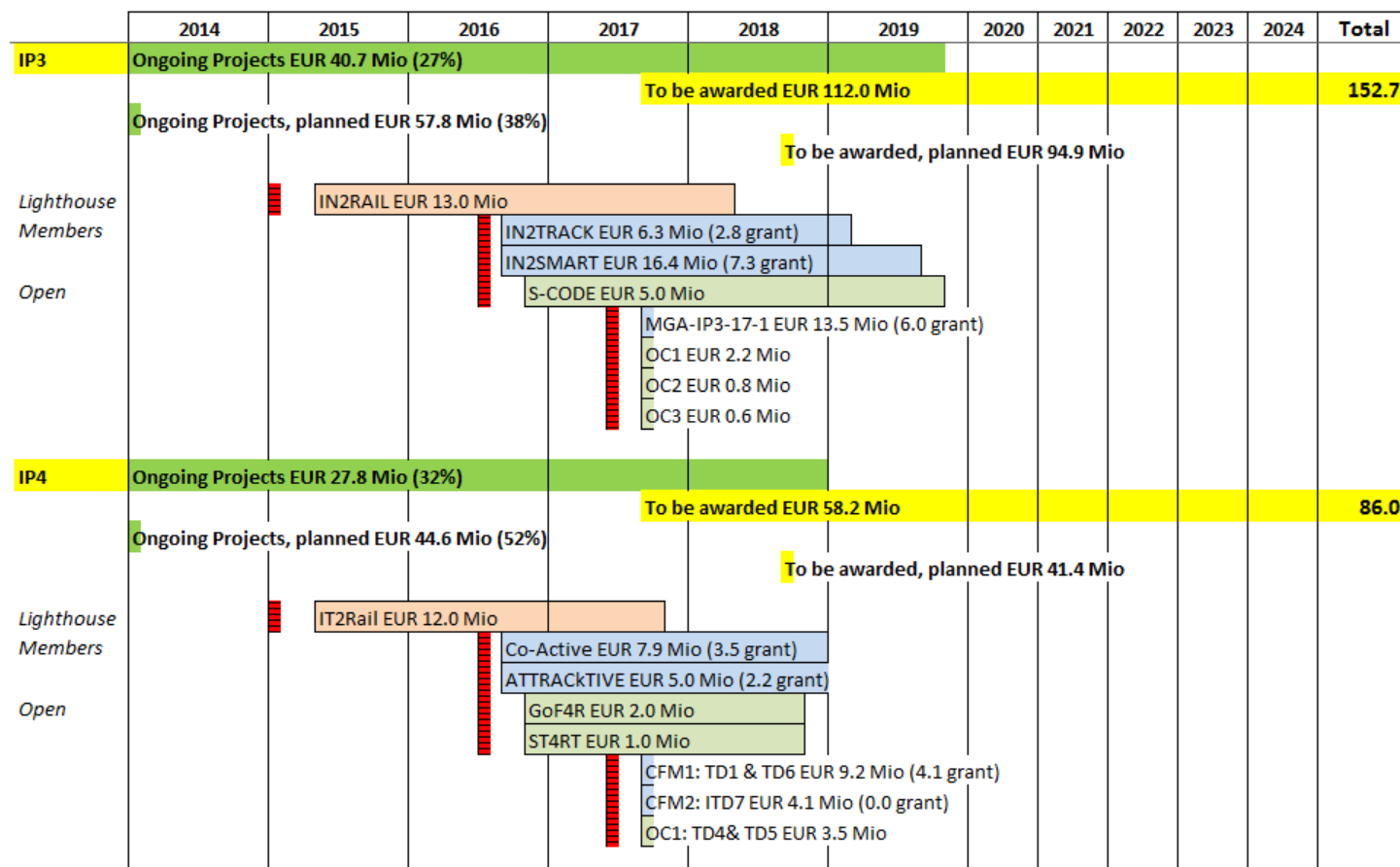


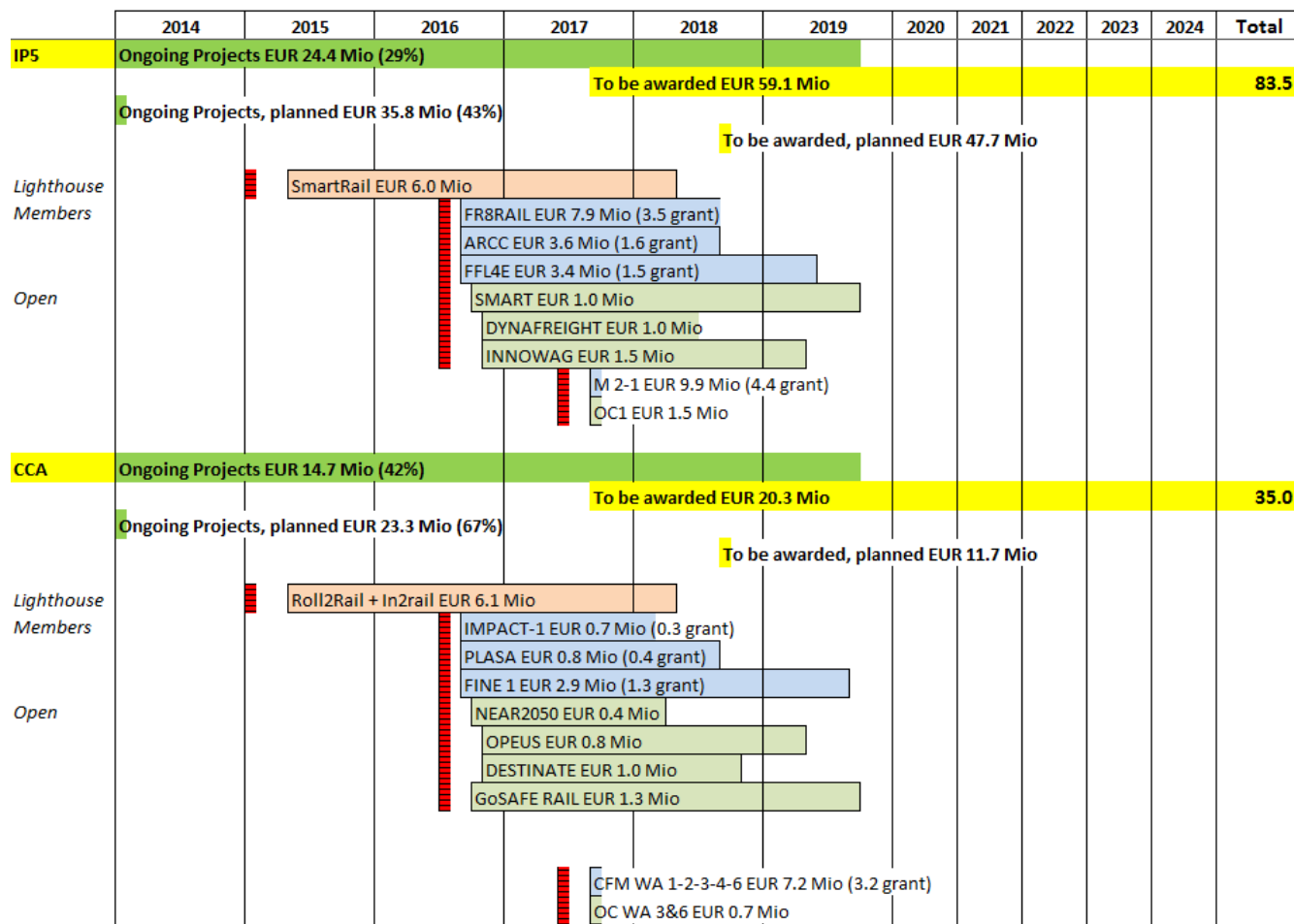
WHAT'S GOING ON



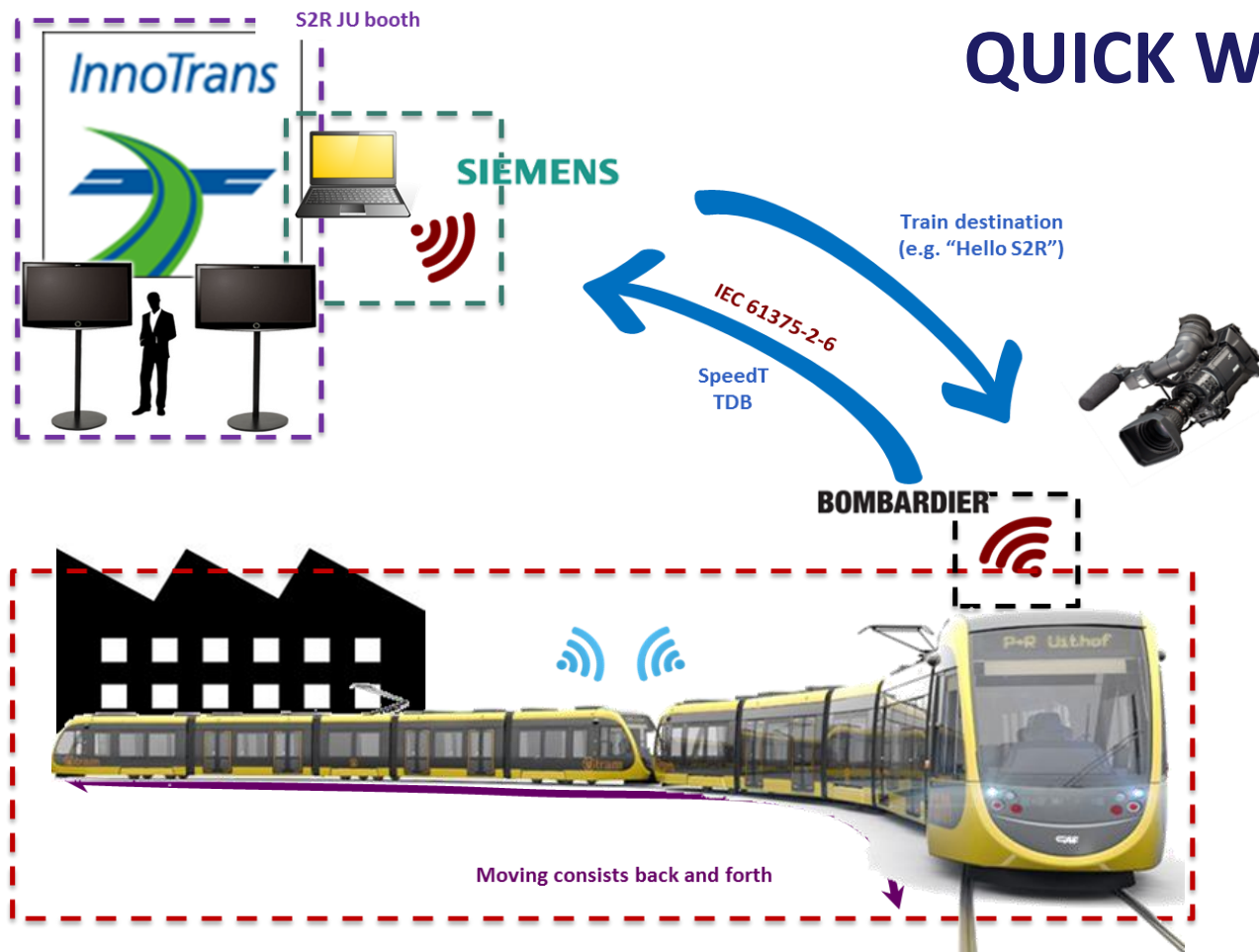
S2R CALL FOR PROPOSALS 2017



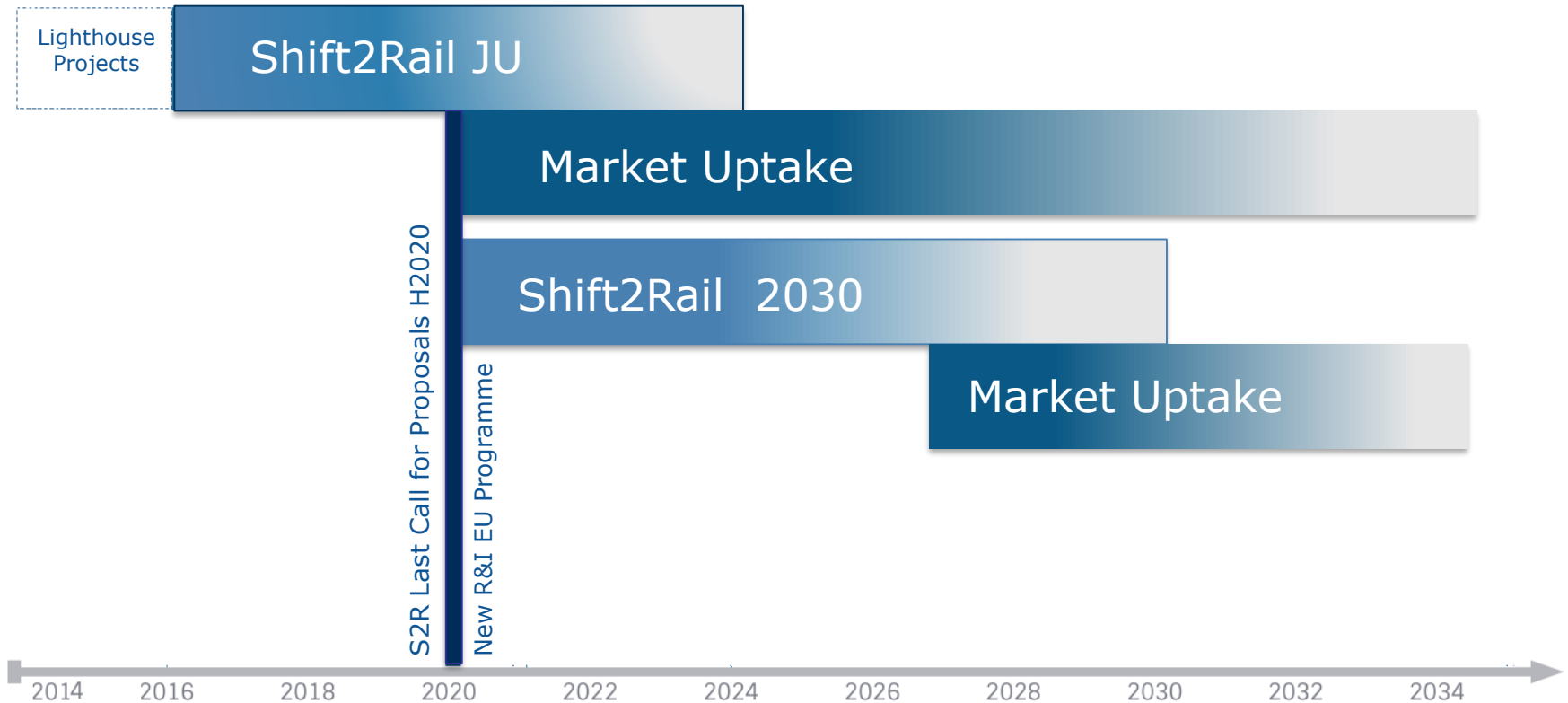




QUICK WINS



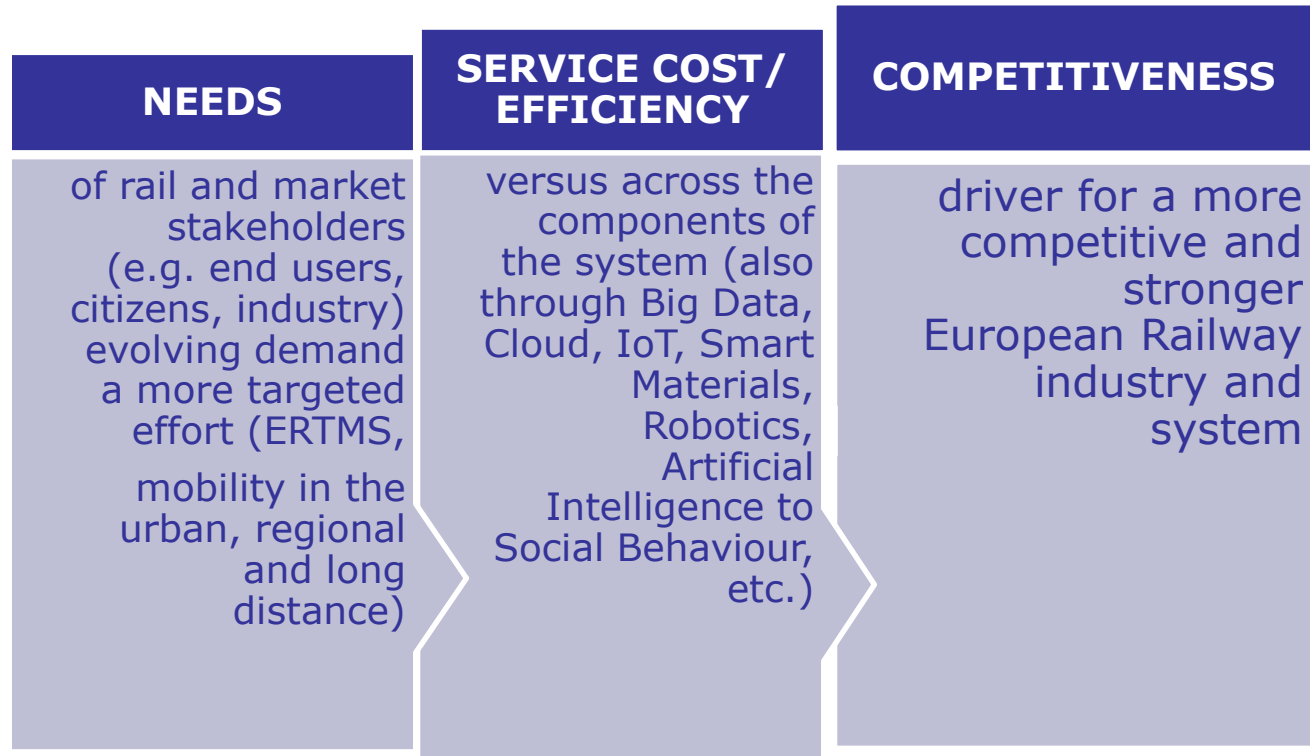
R&I BEYOND 2020



UNION COMMITMENT TO IMPLEMENT 2030 GLOBAL AGENDA AND SUSTAINABLE DEVELOPMENT GOALS



RAIL R&I

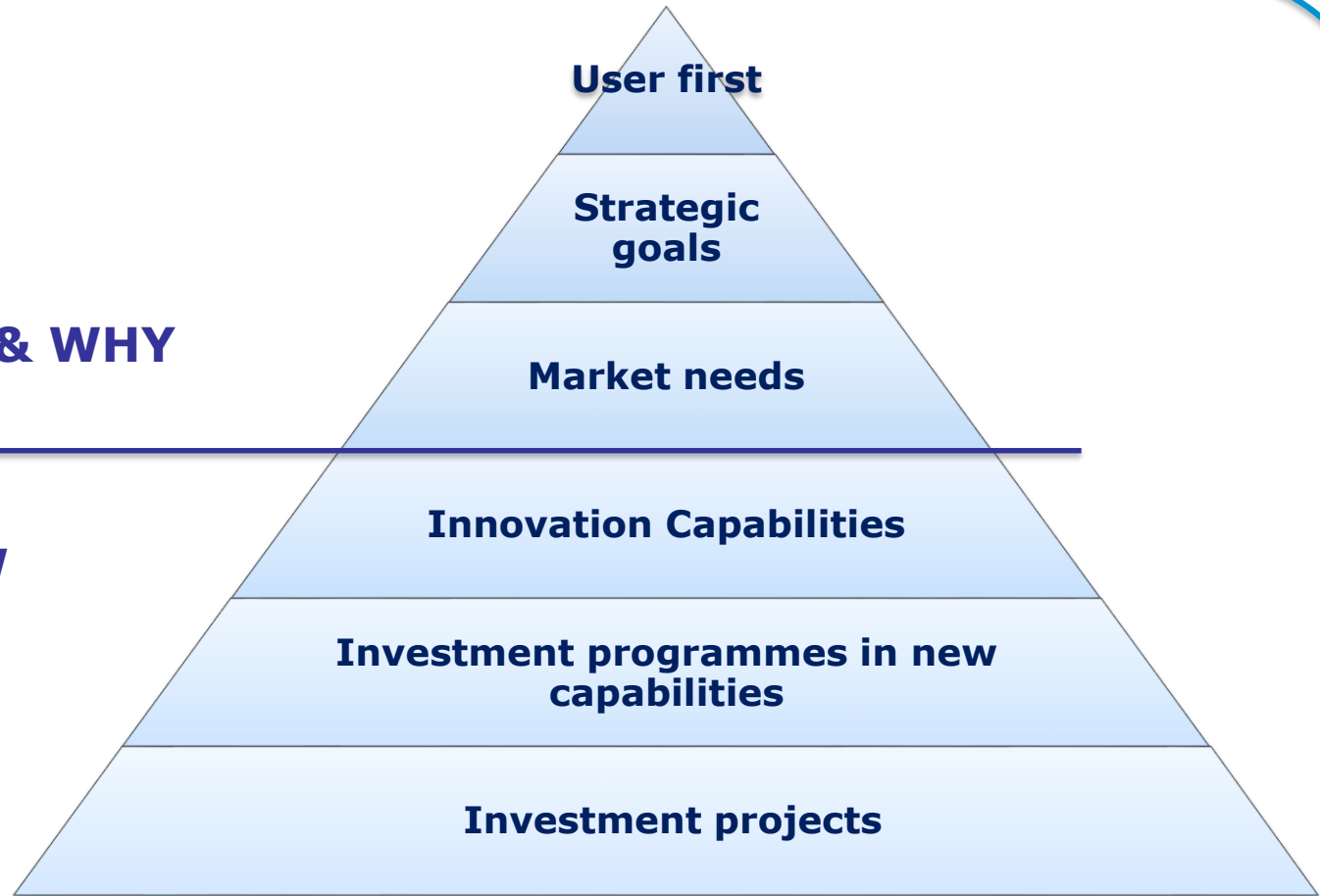


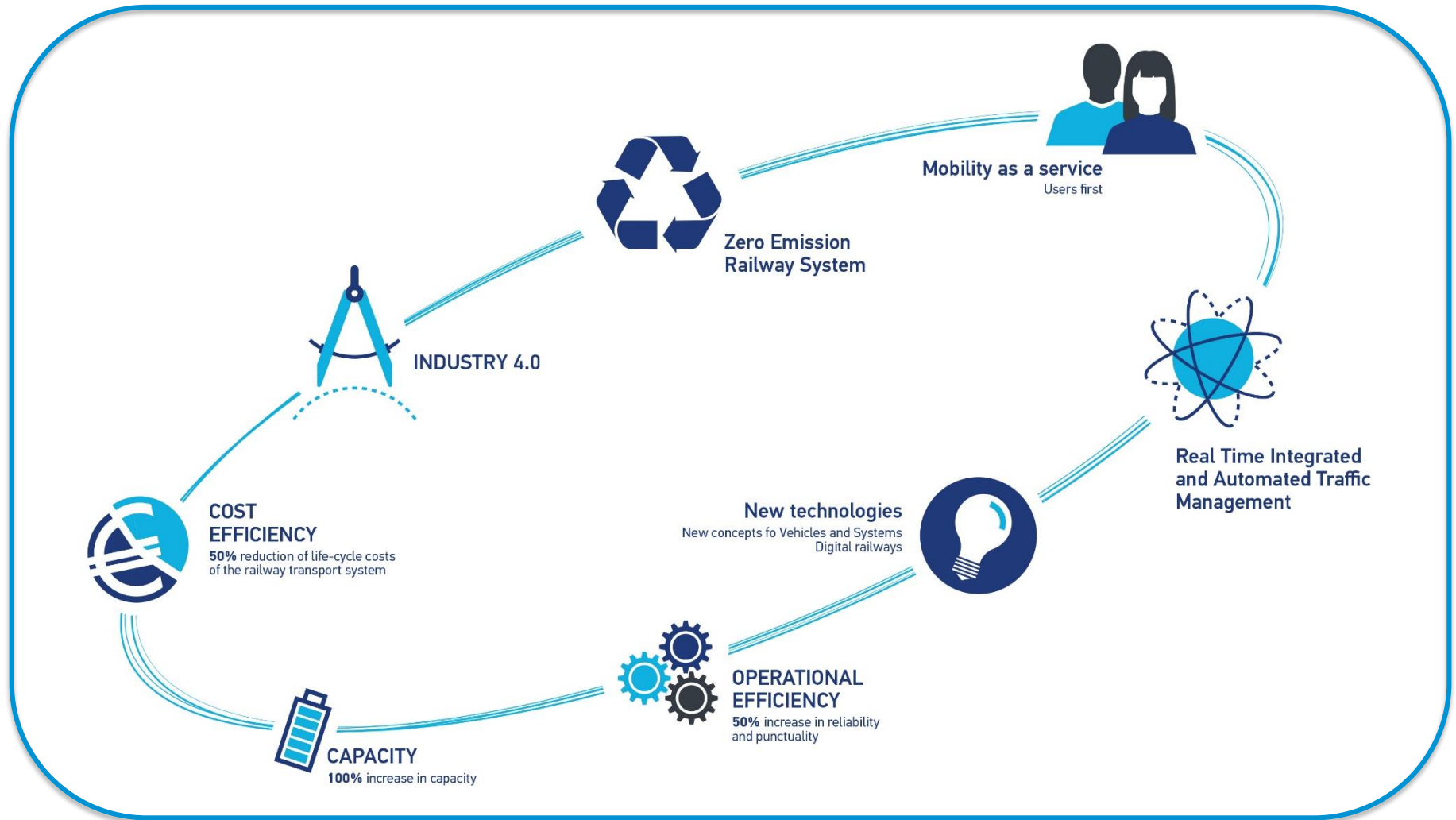
**USER FIRST:
USER CENTRIC MOBILITY
AS A SERVICE**

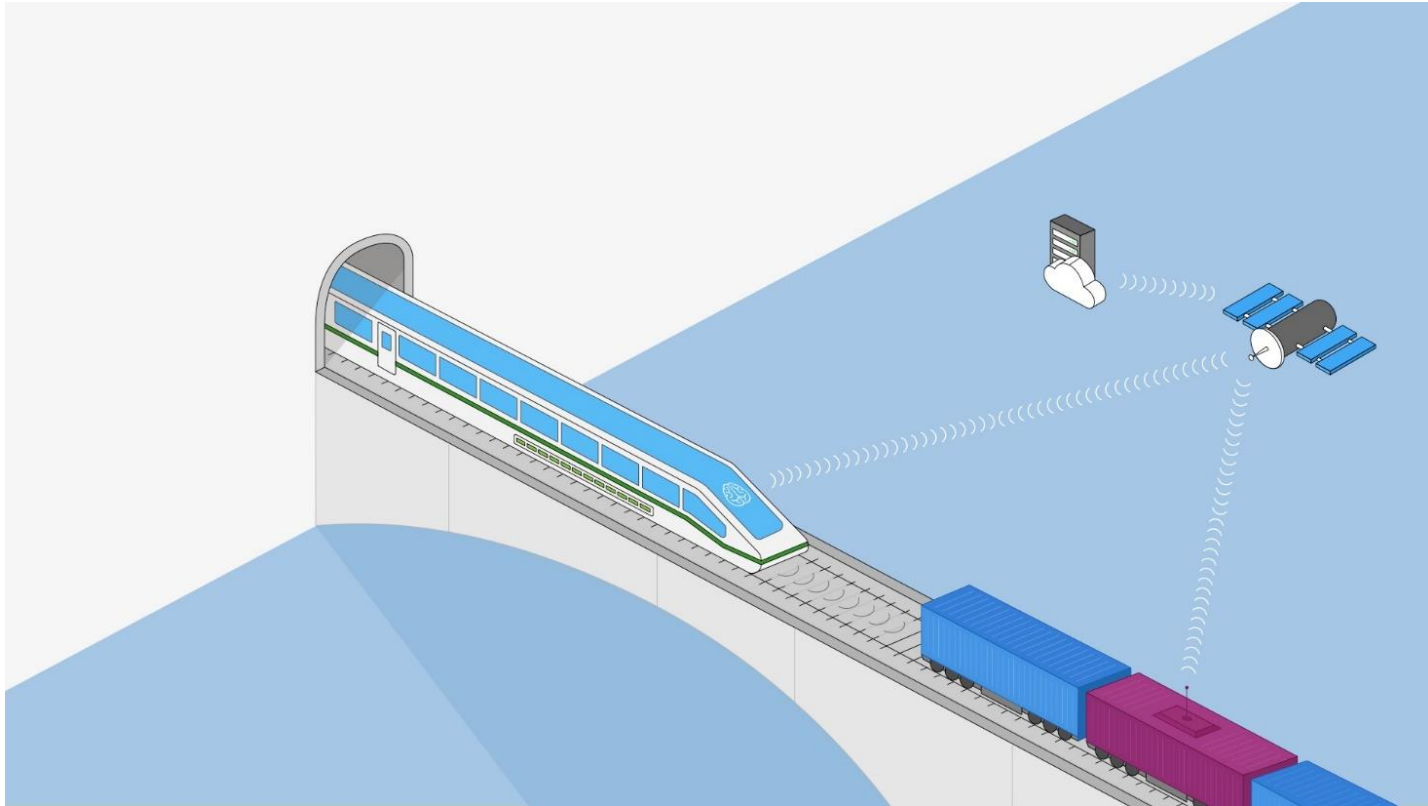


WHAT & WHY

HOW







Thank you

